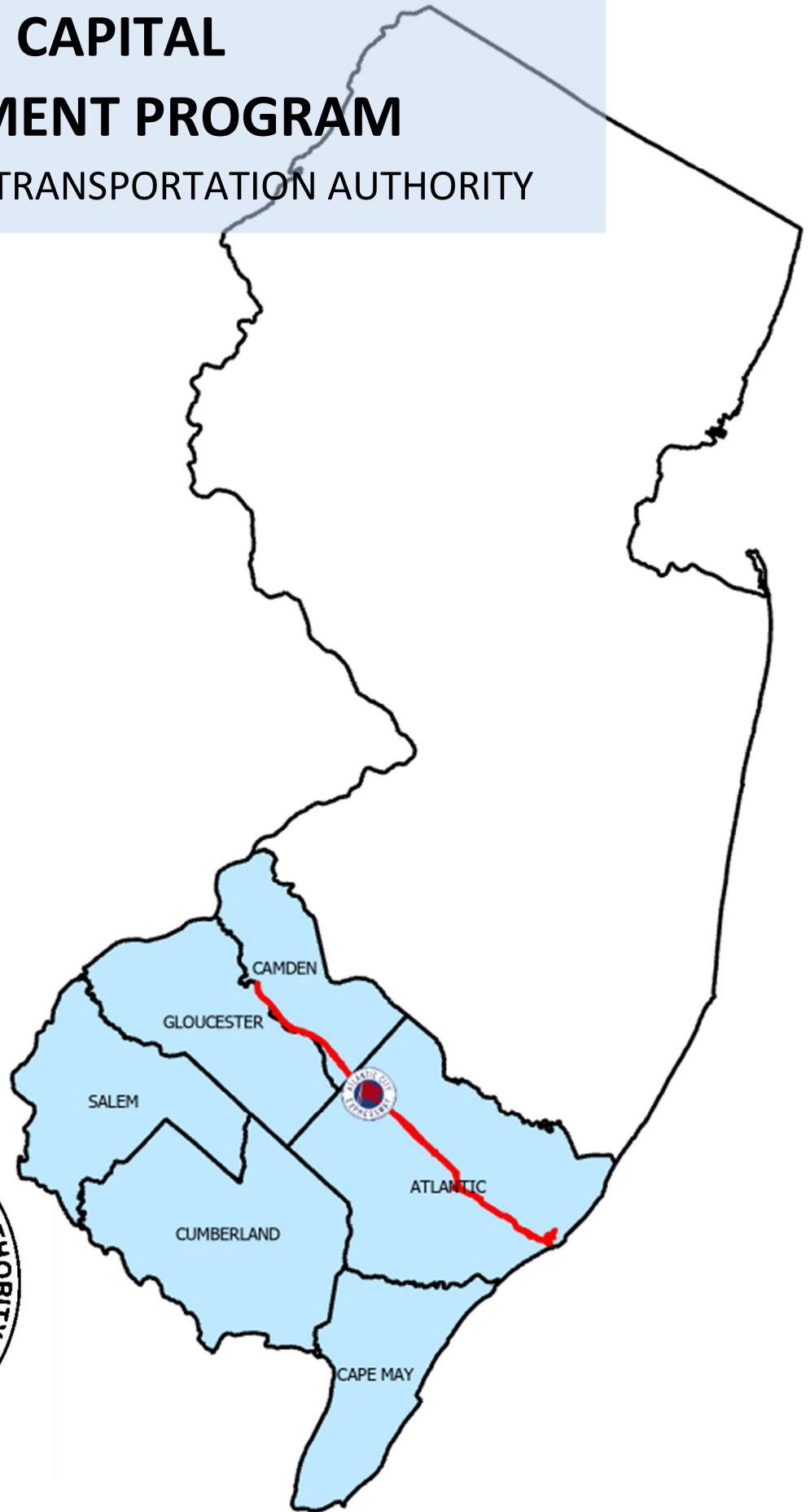


PROPOSED CAPITAL IMPROVEMENT PROGRAM

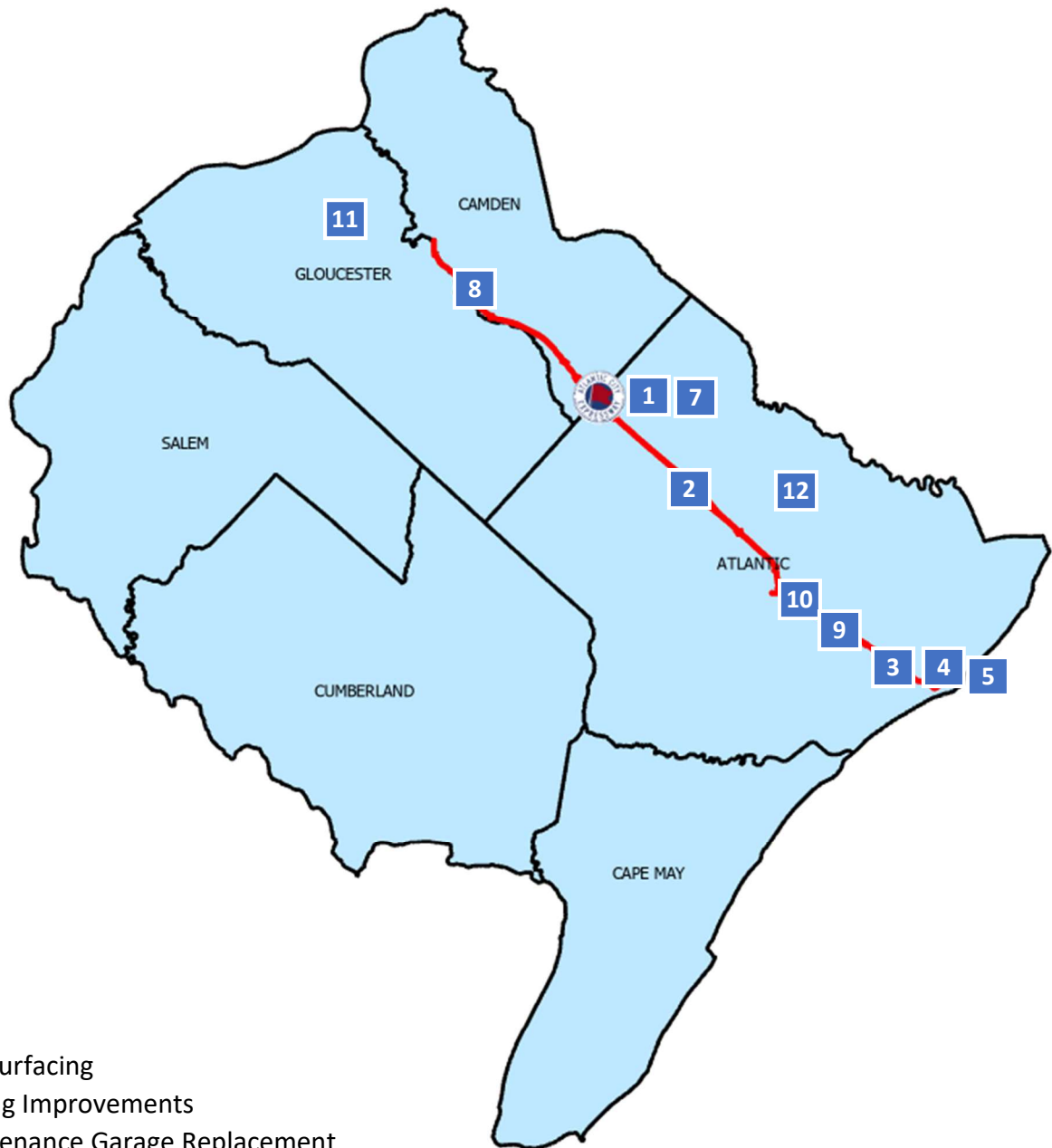
SOUTH JERSEY TRANSPORTATION AUTHORITY



APRIL 2020



SOUTH JERSEY TRANSPORTATION AUTHORITY PROPOSED CAPITAL IMPROVEMENT PROGRAM

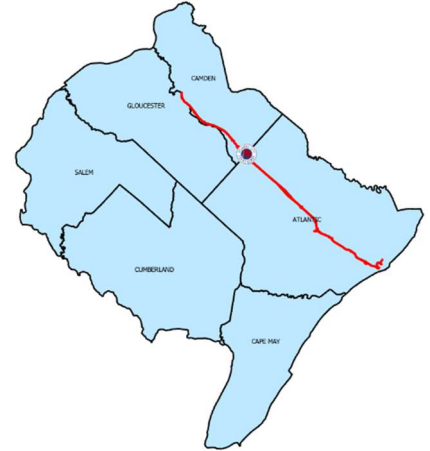


1. AC Expressway Resurfacing
2. Interchange Lighting Improvements
3. Pleasantville Maintenance Garage Replacement
4. AC Expressway Connector, Rt 30, Rt 87, Rt 187, AC Corridor Resurfacing
5. AC Expressway Connector & Tunnel LED Lighting Upgrades
6. AC Expressway Fleet Replacement
7. All Electronic Tolling & ITS Upgrades
8. AC Expressway Third Lane Widening
9. AC Expressway Interchange 7 Improvements
10. AC Expressway / ACY Direct Connector
11. Glassboro-Camden Light Rail Line
12. Upgrades to Atlantic City Rail Line

Note: Project schedules detailed herein do not begin concurrently with the adoption of this Capital Plan



APRIL 2020



ATLANTIC CITY EXPRESSWAY RESURFACING

PROJECT DESCRIPTION

This project involves supplemental pavement milling and resurfacing to maintain state of good repair for the Atlantic City Expressway mainline in 2020. It is also intended that beginning in 2021 the Authority's annual resurfacing program will receive a bump over current funding which has averaged \$1.5M to \$2.5M a year over the last five years.

POTENTIAL ENVIRONMENTAL / AGENCY COORDINATION

None Anticipated

POTENTIAL RIGHT-OF-WAY IMPACTS

None Anticipated

UTILITIES

None Anticipated

STATUS

To be programmed

LOCATION

System-wide

TOTAL PROJECT COST

\$10 Million

SCHEDULE

Planning & Design:

3 months

Construction:

3 months

BENEFITS

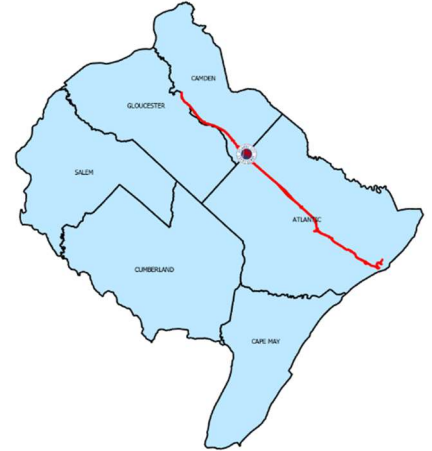
Safety

State of Good Repair

Customer Satisfaction



APRIL 2020



INTERCHANGE LIGHTING IMPROVEMENTS

PROJECT DESCRIPTION

This project involves modernization of interchange ramp lighting at Interchanges 5, 7, 12, 14, 28, and 31 on the Expressway. Existing “modern” fixtures will be converted to LED technology. Older span wire and wood pole lighting will be removed and replaced with modern LED highway lighting.

POTENTIAL ENVIRONMENTAL / AGENCY COORDINATION

None Anticipated

POTENTIAL RIGHT-OF-WAY IMPACTS

None Anticipated

UTILITIES

Atlantic City Electric

STATUS

In Design

LOCATION

Atlantic County

TOTAL PROJECT COST

\$2 Million

SCHEDULE

Planning & Design:

3 months

Construction:

6 months

BENEFITS

Safety

State of Good Repair

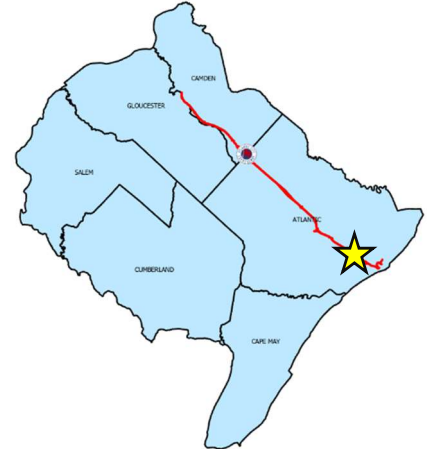
Customer Satisfaction

Resiliency

Sustainability



APRIL 2020



PLEASANTVILLE MAINTENANCE GARAGE REPLACEMENT

PROJECT DESCRIPTION

This project will replace an existing two-bay vehicle maintenance garage with a new modern four to five bay garage. The garage to be replaced, like most other facilities, is original to the construction of the AC Expressway in 1964. It no longer meets the current equipment and fleet needs for the long-term operation of the Expressway.

POTENTIAL ENVIRONMENTAL / AGENCY COORDINATION

NJDEP (CAFRA)

POTENTIAL RIGHT-OF-WAY IMPACTS

None Anticipated

UTILITIES

Atlantic City Electric
Pleasantville Sewer Department
New Jersey American Water Company

STATUS

To be programmed

LOCATION

Pleasantville
Maintenance Yard

TOTAL PROJECT COST

\$1.5 Million

SCHEDULE

Planning & Design:

4 months

Construction:

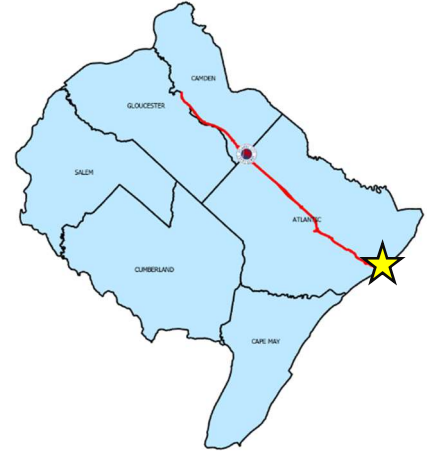
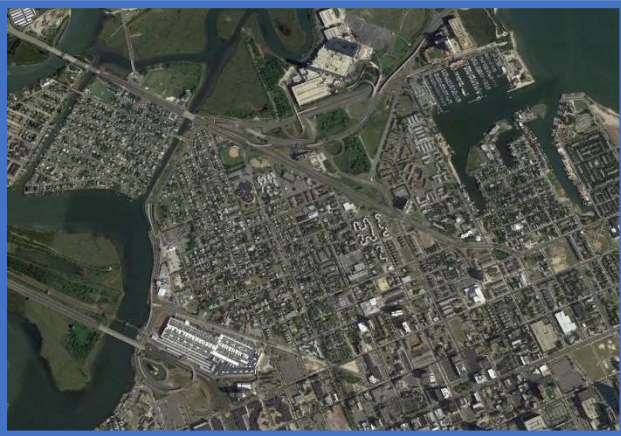
8 months

BENEFITS

Safety
State of Good Repair
Resiliency



APRIL 2020



SJTA ATLANTIC CITY RESURFACING

PROJECT DESCRIPTION

This project provides a one-time supplement to the Authority's annual resurfacing project and includes the resurfacing of the entire length of the AC Expressway Connector including the tunnel and all ramps. The project also includes the resurfacing the SJTA's other roadway assets in Atlantic City including:

- Route 30 – Milepost 57.2 to 58.1
- Route 87 – Milepost 0.0 to 1.7
- Route 187 – Milepost 0.0 to 0.4
- Arkansas Avenue – Fairmount Ave to Atlantic Ave
- Columbus Blvd – Fairmount Ave to Atlantic Ave
- Arctic Avenue – Arkansas Ave to Columbus Blvd
- Fairmount Avenue – Arkansas Ave to Columbus Blvd

POTENTIAL ENVIRONMENTAL / AGENCY COORDINATION

None Anticipated

POTENTIAL RIGHT-OF-WAY IMPACTS

None Anticipated

UTILITIES

None Anticipated

STATUS

To be programmed

LOCATION

City of Atlantic City

TOTAL PROJECT COST

\$7.4 Million

SCHEDULE

Planning & Design:

3 months

Construction:

3 months

BENEFITS

Safety

State of Good Repair

Customer Satisfaction

Resiliency



APRIL 2020



AC EXPRESSWAY CONNECTOR & TUNNEL LED LIGHTING

PROJECT DESCRIPTION

This project includes the replacement of more than 350 high pressure sodium light fixtures with LED fixtures on existing highway light standard along the AC Expressway Connector, all ramps, and portions of Route 30, Route 87, and Route 187 in the City of Atlantic City. The project also includes the redesign and replacement of the AC Expressway Connector Tunnel Lighting System to LED Technology.

POTENTIAL ENVIRONMENTAL / AGENCY COORDINATION

None Anticipated

POTENTIAL RIGHT-OF-WAY IMPACTS

None Anticipated

UTILITIES

None Anticipated

STATUS

To be programmed

LOCATION

City of Atlantic City

TOTAL PROJECT COST

\$1.3 Million

SCHEDULE

Planning & Design:

3 months

Construction:

4 months

BENEFITS

Safety

State of Good Repair

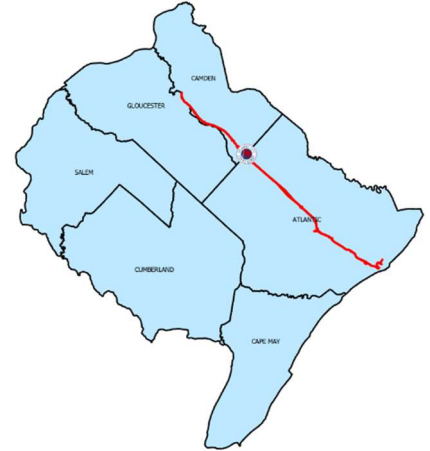
Customer Satisfaction

Resiliency

Sustainability



APRIL 2020



ATLANTIC CITY EXPRESSWAY FLEET REPLACEMENT

PROJECT DESCRIPTION

This project includes the replacement of fleet equipment including dump trucks, pick-up trucks, work vans, and passenger vehicles that have well exceeded their useful life.

POTENTIAL ENVIRONMENTAL / AGENCY COORDINATION

None Anticipated

POTENTIAL RIGHT-OF-WAY IMPACTS

None Anticipated

UTILITIES

None Anticipated

STATUS

To be programmed

LOCATION

System Wide

TOTAL PROJECT COST

\$5.2 Million

SCHEDULE

Procurement:

2 months

Delivery:

12 months

BENEFITS

Safety

State of Good Repair

Resiliency

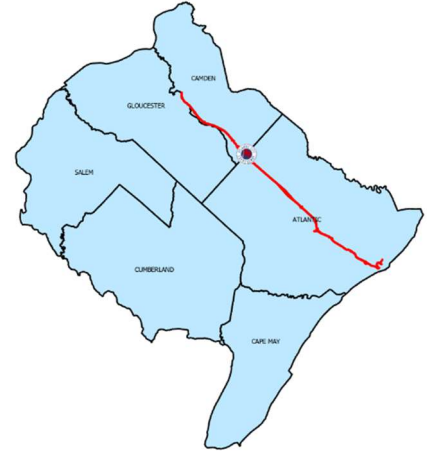
Sustainability

Long Term Financial

Stability



APRIL 2020



ALL ELECTRONIC TOLLING & ITS UPGRADES

PROJECT DESCRIPTION

This project involves the complete conversion of the AC Expressway toll system to a cashless system. It includes the construction of toll equipment gantries along the entire length of the Expressway. Customers without an E-ZPass will receive a “bill by plate” invoice in lieu of paying a cash toll. The project includes the complete removal of both mainline barrier toll plazas and all existing ramp toll plazas.

The project includes an ITS element including new Dynamic Message Boards, traffic cameras and other technology for an improved customer experience.

POTENTIAL ENVIRONMENTAL / AGENCY COORDINATION

NJDEP
Pinelands Commission
Multiple Soil Conservation Districts

POTENTIAL RIGHT-OF-WAY IMPACTS

None Anticipated

UTILITIES

None Anticipated

STATUS

In Design

LOCATION

System-wide

TOTAL PROJECT COST

\$40 Million

SCHEDULE

Planning & Design:

9 months

Construction:

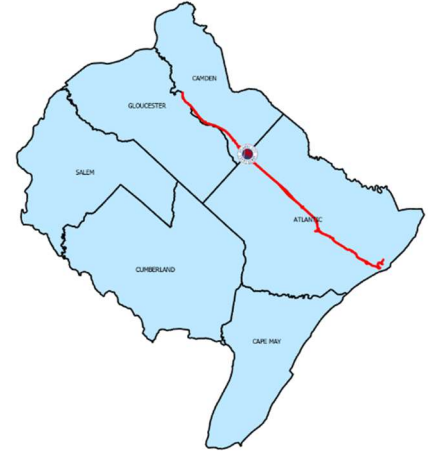
18 months

BENEFITS

Safety
Innovation
Congestion Management
State of Good Repair
Customer Satisfaction
Long-Term Financial Stability



APRIL 2020



THIRD LANE WIDENING

PROJECT DESCRIPTION

This project involves the widening of the Atlantic City Expressway to three lanes in each direction from milepost 31.6 (Interchange 31) to the western terminus at State Route 42. The project anticipates the reconstruction / replacement of two bridges over Route 42 and two bridges over the Great Egg Harbor River, as well as the widening / reconstruction of 16 pipe culverts along the route.

POTENTIAL ENVIRONMENTAL / AGENCY COORDINATION

NJDEP
Pinelands Commission
New Jersey Department of Transportation
Multiple Soil Conservation Districts
Multiple Municipalities

POTENTIAL RIGHT-OF-WAY IMPACTS

None Anticipated

UTILITIES

None Anticipated

STATUS

To be programmed

LOCATION

Atlantic, Camden, &
Gloucester Counties

TOTAL PROJECT COST

\$150 Million

SCHEDULE

Planning & Design:

24 months

Construction:

60 months

BENEFITS

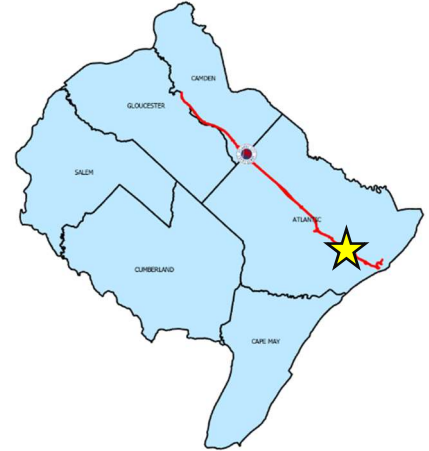
Safety

Congestion Management

Customer Satisfaction



APRIL 2020



INTERCHANGE 7 IMPROVEMENTS

PROJECT DESCRIPTION

This project involves the realignment of the northbound Garden State Parkway Exit 38B to the Atlantic City Expressway westbound to eliminate the two-lane jug-handle exit ramp and merge/diverge area on the Expressway and replace it with a new two-lane “fly-over” ramp. The project will eliminate congestion on the Garden State Parkway during the peak summer season, while providing a higher speed and more efficient movement of traffic between the two toll roads.

POTENTIAL ENVIRONMENTAL / AGENCY COORDINATION

NJDEP
Pinelands Commission
New Jersey Turnpike Authority
Multiple Soil Conservation Districts

POTENTIAL RIGHT-OF-WAY IMPACTS

None Anticipated

UTILITIES

Atlantic City Electric
NJTA Fiber Optic
Billboard Impacts

STATUS

To be programmed

LOCATION

Egg Harbor Township

TOTAL PROJECT COST

\$20 Million

SCHEDULE

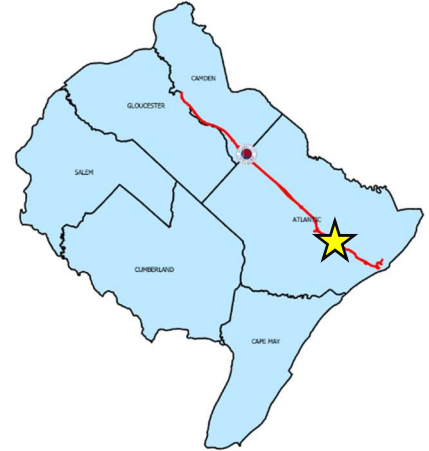
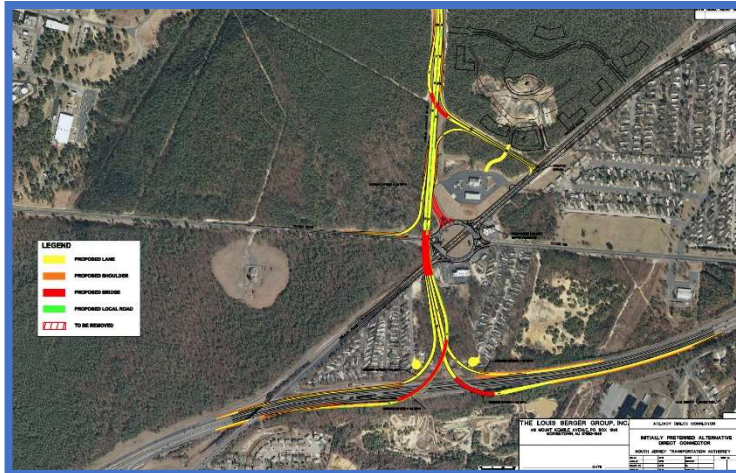
Planning & Design:
18 months
Construction:
30 months

BENEFITS

Safety
Congestion Management
Customer Satisfaction



APRIL 2020



AC EXPRESSWAY / ACY DIRECT CONNECTOR

PROJECT DESCRIPTION

This project involves the construction of a new Interchange on the Atlantic City Expressway to provide a direct connection to Atlantic City International Airport and the Federal Aviation Administration William J. Hughes Technical Center. The project involves the realignment of ramps at AC Expressway Interchange 9; the construction of four new bridges and the elimination of the Amelia Earhart Blvd Connection to Airport Circle at Tilton Road (CR 563) and Delilah Road (CR 646).

POTENTIAL ENVIRONMENTAL / AGENCY COORDINATION

NJDEP

Pinelands Commission

Federal Aviation Administration

Atlantic County

Cape Atlantic Conservation Districts

POTENTIAL RIGHT-OF-WAY IMPACTS

Private property acquisition required from two property owners

UTILITIES

Atlantic City Electric

STATUS

Design 90% complete

LOCATION

Egg Harbor Township

TOTAL PROJECT COST

\$60 Million

SCHEDULE

Planning & Design:

18 months

Construction:

30 months

BENEFITS

Safety

Congestion Management

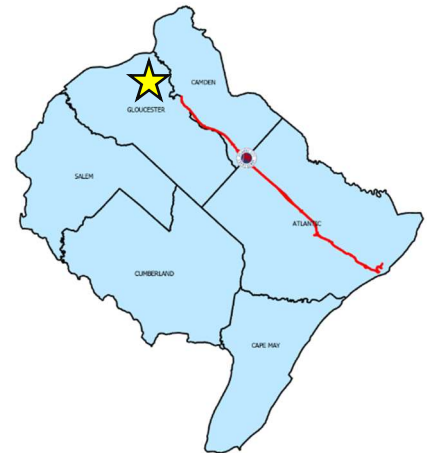
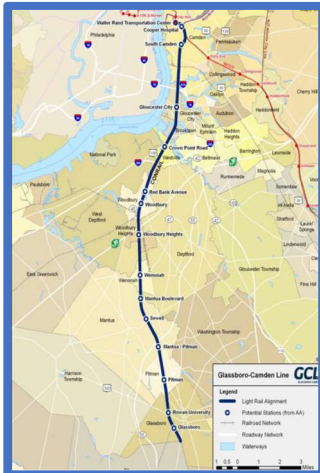
Customer Satisfaction

Economic Development

Resiliency



APRIL 2020



GLASSBORO-CAMDEN LIGHT RAIL LINE

PROJECT DESCRIPTION

The South Jersey Transportation Authority will partner with the Delaware River Port Authority and the New Jersey Transit Corporation on the Glassboro-Camden Light Rail Line.

POTENTIAL ENVIRONMENTAL / AGENCY COORDINATION

NJDEP
New Jersey Transit Corporation
Federal Railroad Administration
Conrail
Gloucester County
Camden County
Multiple Soil Conservation Districts

POTENTIAL RIGHT-OF-WAY IMPACTS

Private property acquisition
Gloucester County & Camden County
Multiple Municipalities
Conrail
New Jersey Department of Transportation

UTILITIES

To Be Determined

STATUS

To Be Programmed

LOCATION

Gloucester County
Camden County

TOTAL PROJECT COST

To Be Determined

SCHEDULE

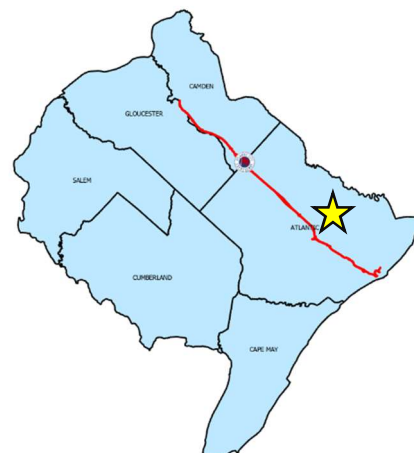
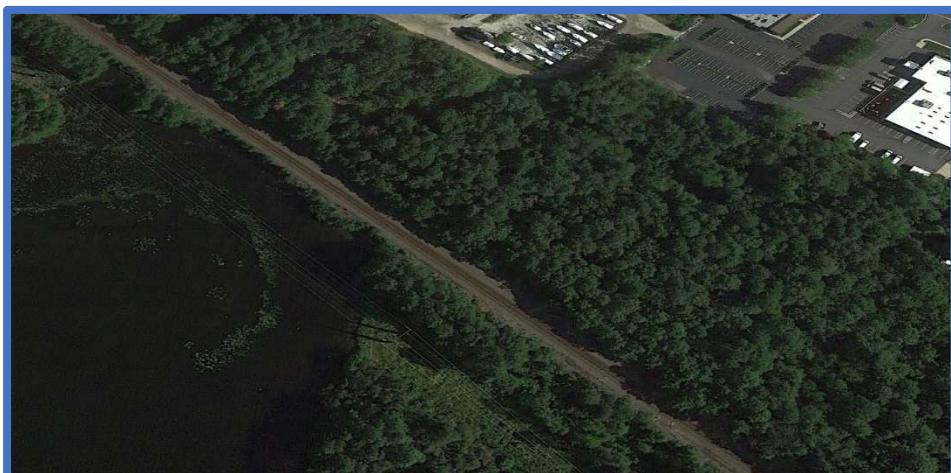
To Be Determined

BENEFITS

Congestion Management
Customer Satisfaction
Economic Development
Sustainability



APRIL 2020



UPGRADES TO ATLANTIC CITY RAIL LINE

PROJECT DESCRIPTION

The South Jersey Transportation Authority will partner with the New Jersey Transit Corporation on upgrades to the Atlantic City Rail Line.

POTENTIAL ENVIRONMENTAL / AGENCY COORDINATION

NJDEP	Pinelands Commission
New Jersey Turnpike Authority	New Jersey Transit Corporation
Federal Railroad Administration	Federal Aviation Administration
Atlantic County	Camden County
Multiple Soil Conservation Districts	

POTENTIAL RIGHT-OF-WAY IMPACTS

Private property acquisition
 Atlantic County & Camden County
 Multiple Municipalities
 New Jersey Turnpike Authority
 New Jersey Department of Transportation

UTILITIES

Atlantic City Electric, PSE&G, South Jersey Gas
 Multiple Water Companies
 Multiple Sewer Authorities

STATUS

To Be Programmed

LOCATION

Atlantic County
 Camden County

TOTAL PROJECT COST

To Be Determined

SCHEDULE

To Be Determined

BENEFITS

Congestion Management
 Customer Satisfaction
 Economic Development
 Sustainability



APRIL 2020